



PRODUCTS

PAPER YARN CARPETS

SEWN EDGES



Designs: All paper yarn carpets (see pages 48-55)
Design: Ritva Puotila
Material: 86 % paper yarn (weft), 14 % cotton (warp)
Finishing: type O, sewn edges and turned ends
Weight: approx. 1,90 kg/m²
Thickness: 6 mm
Suggested application: residential and light contract

Carpets are supplied to order: The maximum width is 250 cm and the maximum length 5 m. Carpets are supplied with soil-repellent treatment. The use of non-skid underlay is recommended.

SEWN EDGES AND FRINGES



Designs: All paper yarn carpets (see pages 48-55)
Design: Ritva Puotila
Material: 86 % paper yarn (weft), 14 % cotton (warp)
Finishing: type H, sewn edges and fringes, length of fringes 9 cm
Weight: approx. 1,90 kg/m²
Thickness: 6 mm
Suggested application: residential and light contract

Carpets are supplied to order: The maximum width is 250 cm and the maximum length 5 m. Carpets are supplied with soil-repellent treatment. The use of non-skid underlay is recommended.

SEWN EDGES AND BACKING



Designs: All paper yarn carpets (see pages 48-55)
Design: Ritva Puotila
Material: 76 % paper yarn (weft), 13 % cotton (warp),
11 % polyester felt (backing)
Finishing: type S, sewn edges and turned ends
Weight: approx. 2,20 kg/m² (incl. backing)
Thickness: 6 mm with felt backing
Suggested application: residential and light contract

Carpets are supplied to order: The maximum width is 330 cm and the maximum length 10 m. Carpets are supplied with soil-repellent treatment.

SEWN EDGES, BACKING AND FRINGES



Designs: All paper yarn carpets (see pages 48-55)
Design: Ritva Puotila
Material: 76 % paper yarn (weft), 13 % cotton (warp),
11 % polyester felt (backing)
Finishing: type F, sewn edges and fringes, length of fringes 9 cm
Weight: approx. 2,20 kg/m² (incl. backing)
Thickness: 6 mm with felt backing
Suggested application: residential and contract

Carpets are supplied to order: The maximum width is 330 cm and the maximum length 10 m. Carpets are supplied with soil-repellent treatment.

NARROW EDGING AND BACKING



- Designs: All paper yarn carpets (see pages 48-55)
 Design: Ritva Puotila
 Material: 76 % paper yarn (weft), 13 % cotton (warp),
 11% polyester felt (backing)
 Finishing: type P, bound around the edges with 1 cm wide
 cotton border
 Weight: approx. 2,20 kg/m² (incl. backing)
 Thickness: 6 mm with felt backing
 Suggested application: residential and contract

Carpets are supplied to order. The maximum width is 330 cm and the maximum length 10 m. Carpets are supplied with soil-repellent treatment. Round carpets are also available in this quality.

WIDE EDGING AND BACKING



- Designs: All paper yarn carpets (see pages 48-55)
 Design: Ritva Puotila
 Material: 76 % paper yarn (weft), 13 % cotton (warp),
 11% polyester felt
 Finishing: type T, bound around the edges with 6 cm wide paper yarn
 cotton border
 Weight: approx. 2,20 kg/m² (incl. backing)
 Thickness: 6 mm with felt backing
 Suggested application: residential and contract

Carpets are supplied to order. The maximum width is 330 cm and the maximum length 10 m. Carpets are supplied with soil-repellent treatment.

WIDE EDGING



- Designs: All paper yarn carpets (see pages 48-55)
 Design: Ritva Puotila
 Material: 86 % paper yarn (weft), 14 % cotton (warp)
 Finishing: type K, bound around the edges with 6 cm wide paper yarn
 cotton border
 Weight: approx. 1,95 kg/m²
 Thickness: 6 mm
 Suggested application: residential and light contract

Carpets with paper yarn cotton edging are designed for reversible use and supplied to order. The maximum width is 330 cm and the maximum length 10 m. Carpets are supplied with soil-repellent treatment on both sides. The use of non-skid underlay is recommended.

The strength and durability of paper yarn derive directly from wood fibre. The compactness of the wood fibres means that paper yarn does not gather dust or dirt, an important feature particularly for those allergic to dust. Woodnotes carpets tolerate well humid conditions. Due to the tight weave and choice of material, the carpets do not ignite easily, only the surface becomes charred.



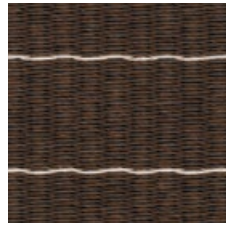
PAPER YARN CARPETS



12495 LINE
BLACK-NATURAL



124199 LINE
ANTIQUÉ-BLACK



1242015 LINE
ONYX-STONE



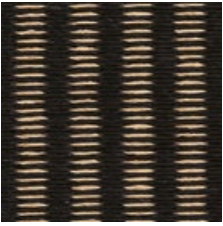
124151 LINE
STONE-WHITE



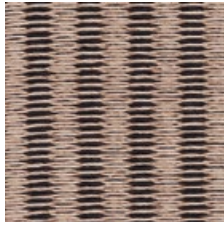
124159 LINE
STONE-BLACK



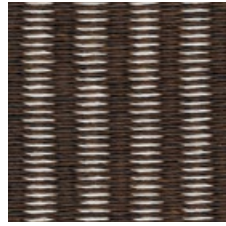
1244015 LINE
GRAPHITE-STONE



11695 RAILWAY
BLACK-NATURAL



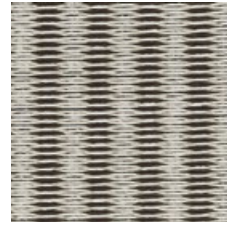
116199 RAILWAY
ANTIQUÉ-BLACK



1162015 RAILWAY
ONYX-STONE



116151 RAILWAY
STONE-WHITE



116159 RAILWAY
STONE-BLACK



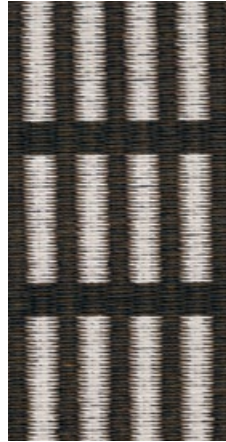
1164015 RAILWAY
GRAPHITE-STONE



11895 NEWYORK
BLACK-NATURAL



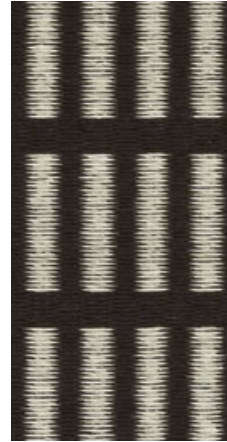
118919 NEWYORK
BLACK-ANTIQUÉ



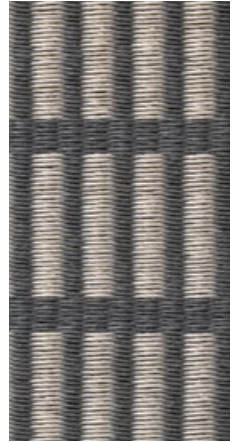
1182015 NEWYORK
ONYX-STONE



118151 NEWYORK
STONE-WHITE



118915 NEWYORK
BLACK-STONE



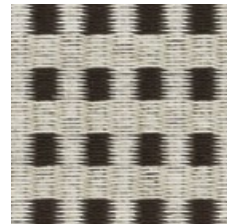
1184015 NEWYORK
GRAPHITE-STONE



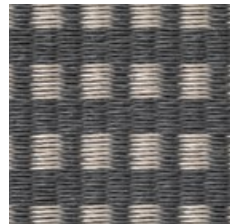
11795 CITY
BLACK-NATURAL



117151 CITY
STONE-WHITE



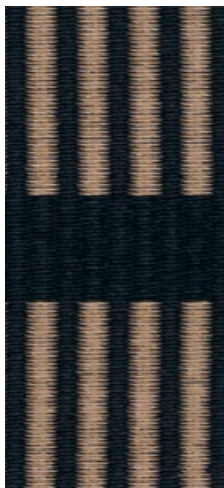
117159 CITY
STONE-BLACK



1174015 CITY
GRAPHITE-STONE



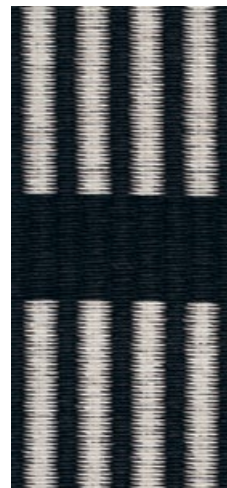
11595 CUT STRIPE
BLACK-NATURAL



115919 CUT STRIPE
BLACK-ANTIQUÉ



115151 CUT STRIPE
STONE-WHITE



115915 CUT STRIPE
BLACK-STONE



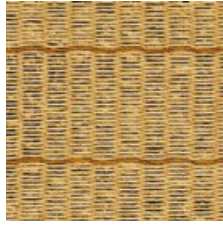
1154015 CUT STRIPE
GRAPHITE-STONE



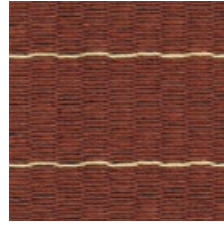
12459 LINE
NATURAL-BLACK



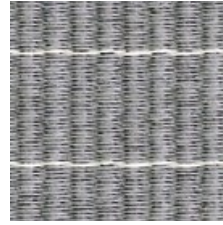
12451 LINE
NATURAL-WHITE



12453 LINE
NATURAL-BROWN



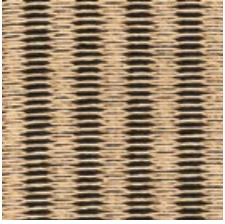
12405 LINE
REDDISH BROWN-NATURAL



124215 LINE
GREY-STONE



12445 LINE
DARK BLUE-NATURAL



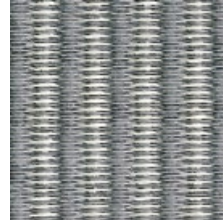
11659 RAILWAY
NATURAL-BLACK



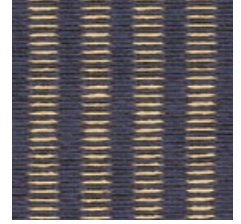
11651 RAILWAY
NATURAL-WHITE



11653 RAILWAY
NATURAL-BROWN



116215 RAILWAY
GREY-STONE



11645 RAILWAY
DARK BLUE-NATURAL



11859 NEW YORK
NATURAL-BLACK



11851 NEW YORK
NATURAL-WHITE



11805 NEW YORK
REDDISH BROWN-NATURAL



118215 NEW YORK
GREY-STONE



11845 NEW YORK
DARK BLUE-NATURAL

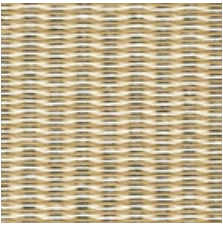


11759 CITY
NATURAL-BLACK

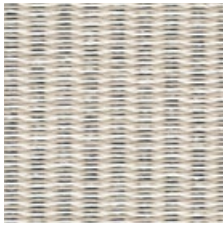
FINISHING OPTIONS

- Sewn edges (O)
- Sewn edges and fringes (H)
- Sewn edges and backing (S)
- Sewn edges, backing and fringes (F)
- Narrow edging and backing (P)
- Wide edging and backing (T)
- Wide edging (K)

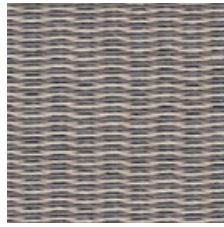
PAPER YARN CARPETS



13251 COAST
NATURAL-WHITE



132151 COAST
STONE-WHITE



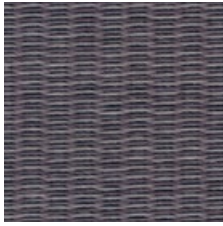
132215 COAST
GREY-STONE



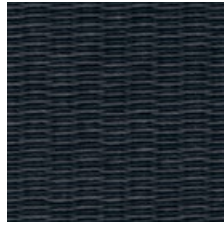
1321519 COAST
STONE-ANTIQUE



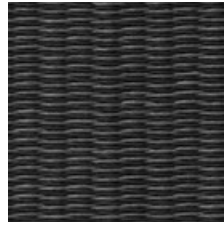
1324030 COAST
GRAPHITE-LIGHT GREY



132132 COAST
DARK VIOLET-GREY



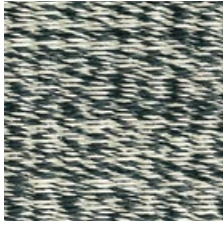
132920 COAST
BLACK-ONYX



1324009 COAST
GRAPHITE-BLACK



130151 LIVING
STONE-WHITE



130159 LIVING
STONE-BLACK



13095 LIVING
BLACK-NATURAL



131115 FIELD
WHITE-STONE



131159 FIELD
STONE-BLACK



125151 SUMMER RAIN
STONE-WHITE

FINISHING OPTIONS

- Sewn edges (O)
- Sewn edges and fringes (H)
- Sewn edges and backing (S)
- Sewn edges, backing and fringes (F)
- Narrow edging and backing (P)
- Wide edging and backing (T)
- Wide edging (K)



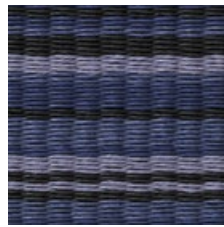
1390140 MIDSUMMER
WHITE-GRAPHITE



1394015 MIDSUMMER
GRAPHITE-STONE



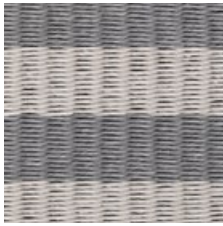
1394009 MIDSUMMER
GRAPHITE-BLACK



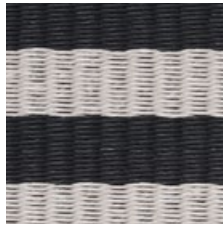
1390409 MIDSUMMER
BLUE-BLACK



1191501 STRIPE
STONE-WHITE



1190215 STRIPE
GREY-STONE



1190915 STRIPE
BLACK-STONE



1190905 STRIPE
BLACK-NATURAL

PAPER YARN CARPETS / BIG STRIPE



1421501 BIG STRIPE
STONE-WHITE



1420215 BIG STRIPE
GREY-STONE



1420915 BIG STRIPE
BLACK-STONE



1420905 BIG STRIPE
BLACK-NATURAL

PAPER YARN CARPETS / ROAD



1441501 ROAD
STONE-WHITE



1440215 ROAD
GREY-STONE



1444030 ROAD
GRAPHITE-LIGHT GREY



1441915 ROAD
ANTIQUÉ-STONE

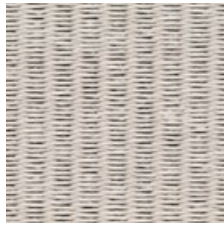


1440932 ROAD
BLACK-NUTRIA

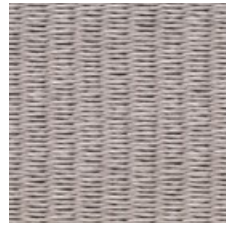
PAPER YARN CARPETS / PLAY COLOUR CHART



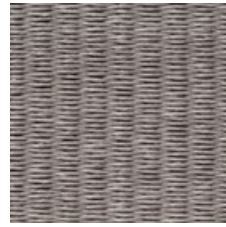
01
WHITE



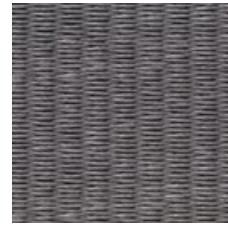
15
STONE



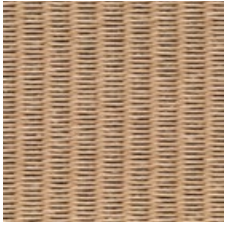
30
LIGHT GREY



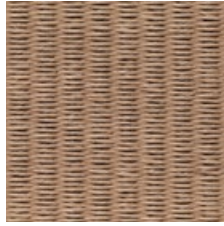
02
GREY



40
GRAPHITE



05
NATURAL



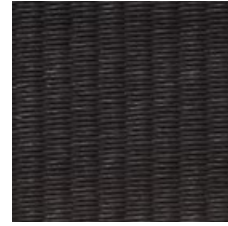
19
ANTIQUE



32
NUTRIA



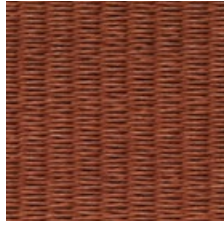
20
ONYX



09
BLACK



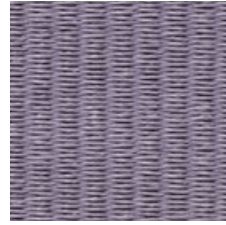
03
BROWN



00
REDDISH BROWN



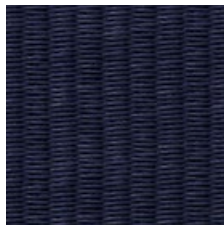
13
DARKVIOLET



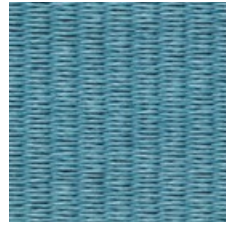
33
GREY PURPLE



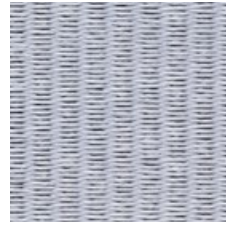
04
DARK BLUE



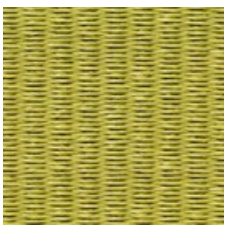
44
INTENSIVE BLUE



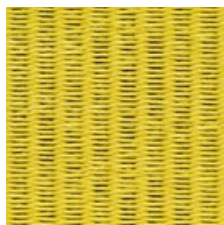
41
TURQUOISE



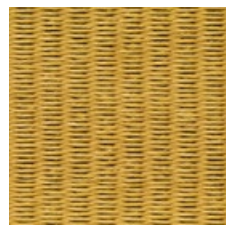
43
LIGHT BLUE



08
GREEN



22
YELLOW



34
BRASS

FINISHING OPTIONS

- Sewn edges (O)
- Sewn edges and fringes (H)
- Sewn edges and backing (S)
- Sewn edges, backing and fringes (F)
- Narrow edging and backing (P)
- Wide edging and backing (T)
- Wide edging (K)

CARPET EDGING

PAPER YARN COTTON

There are 9 colour options available in paper yarn cotton edging. The material composition is 67 % paper yarn (weft) and 33 % cotton (warp). The border measures 12 cm in total of which 6 cm is in sight. Paper yarn edging has been designed for carpets with reversible use as well as for carpets with backing.

COTTON

There are 13 colour options available in cotton edging. The edging border measures 1 cm in sight. Cotton edging is used for carpets with backing.

LEATHER

There are two colour options available in leather edging. The edging border measures 1,5 cm in sight. Leather edging is used for carpets with backing.

LEATHER



1921515 STONE



19299 BLACK

COTTON



1911515 STONE



1913030 LIGHT GREY



1911919 ANTIQUE



19155 NATURAL



1913232 NUTRIA



19122 GREY



1913333 GREY PURPLE



19100 REDDISH BROWN



1911313 DARK VIOLET



19144 DARK BLUE



1912020 ONYX



1914040 GRAPHITE

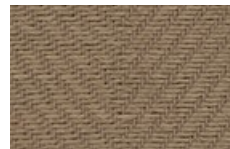


19199 BLACK

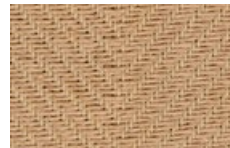
PAPER YARN COTTON



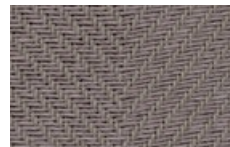
1901515 STONE



1901919 ANTIQUE



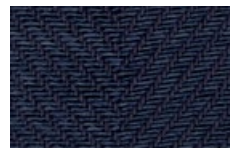
19055 NATURAL



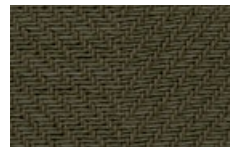
19022 GREY



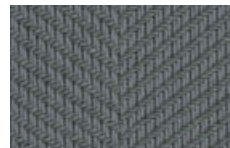
19000 REDDISH BROWN



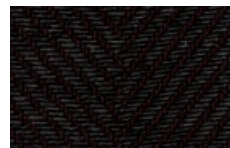
19044 DARK BLUE



1902020 ONYX



1904040 GRAPHITE



19099 BLACK

PAPER YARN CARPETS / PANORAMA



1331501 PANORAMA
STONE-WHITE



1330930 PANORAMA
BLACK-LIGHT GREY



1330905 PANORAMA
BLACK-NATURAL



1330919 PANORAMA
BLACK-ANTIQUE



1334030 PANORAMA
GRAPHITE-LIGHT GREY

PAPER YARN CARPETS / BRIDGE



1360215 BRIDGE
GREY-STONE



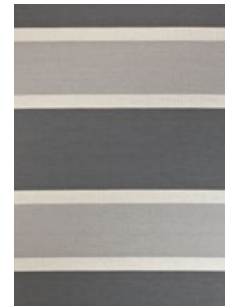
1361530 BRIDGE
STONE-LIGHT GREY



1363034 BRIDGE
LIGHT GREY-BRASS



1363205 BRIDGE
NUTRIA-NATURAL



1364030 BRIDGE
GRAPHITE-LIGHT GREY

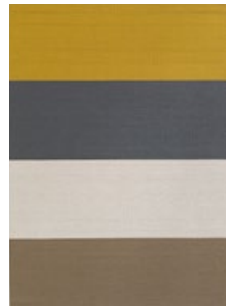
PAPER YARN CARPETS / FOURWAYS



1403001 FOURWAYS
LIGHT GREY-WHITE



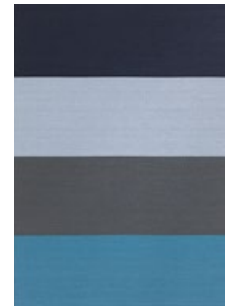
1404015 FOURWAYS
GRAPHITE-STONE



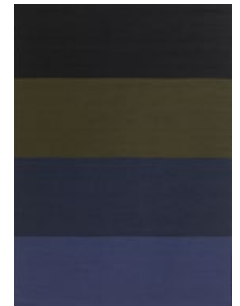
1403432 FOURWAYS
BRASS-NUTRIA



1404140 FOURWAYS
TURQUOISE-GRAPHITE



1404104 FOURWAYS
TURQUOISE-DARK BLUE

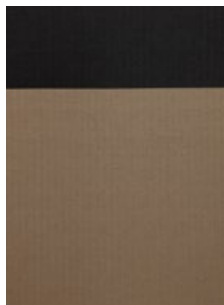


1402009 FOURWAYS
ONYX-BLACK

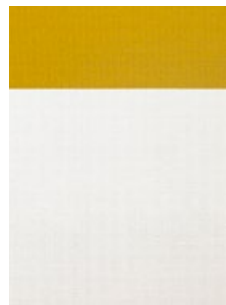
PAPER YARN CARPETS / BEACH



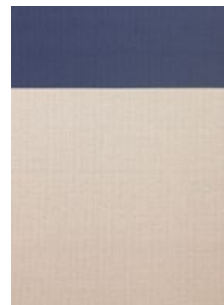
1381501 BEACH
STONE-WHITE



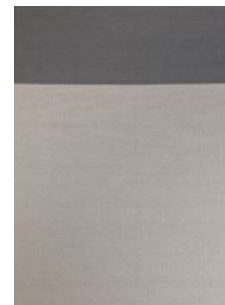
1383209 BEACH
NUTRIA-BLACK



1380134 BEACH
WHITE-BRASS



1381544 BEACH
STONE-INTENSIVE BLUE



1383040 BEACH
LIGHT GREY-GRAPHITE

PAPER YARN CARPETS / SAN FRANCISCO



1431501 SAN FRANCISCO
STONE-WHITE



1433015 SAN FRANCISCO
LIGHT GREY-STONE



1433215 SAN FRANCISCO
NUTRIA-STONE



1430015 SAN FRANCISCO
REDDISH BROWN-STONE



1430432 SAN FRANCISCO
DARK BLUE-NUTRIA



1430115 SAN FRANCISCO
WHITE-STONE



1430215 SAN FRANCISCO
GREY-STONE



1430932 SAN FRANCISCO
BLACK-NUTRIA



1430905 SAN FRANCISCO
BLACK-NATURAL

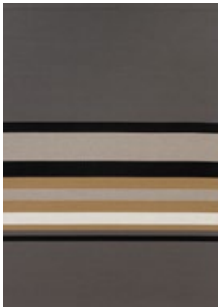


1430415 SAN FRANCISCO
DARK BLUE-STONE

PAPER YARN CARPETS / HORIZON



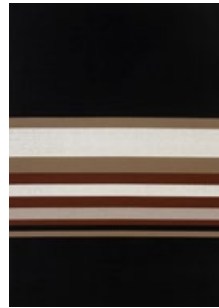
1350115 HORIZON
WHITE-STONE



1350205 HORIZON
GREY-NATURAL



1351522 HORIZON
STONE-YELLOW



1350900 HORIZON
BLACK-REDDISH BROWN

FINISHING OPTIONS

- Sewn edges (O)
- Sewn edges and fringes (H)
- Sewn edges and backing (S)
- Sewn edges, backing and fringes (F)
- Narrow edging and backing (P)
- Wide edging and backing (T)
- Wide edging (K)

COLOUR OPTIONS

The carpets can also be personalized. Colours can be matched to suit individual preferences.

PAPER YARN CARPETS / AVENUE



1371530 AVENUE
STONE-LIGHT GREY



1370230 AVENUE
GREY-LIGHT GREY



1371522 AVENUE
STONE-YELLOW



1373230 AVENUE
NUTRIA-LIGHT GREY



1373040 AVENUE
LIGHT GREY-GRAPHITE



1373033 AVENUE
LIGHT GREY-GREY PURPLE

TUFTED WOOL LINEN CARPETS

SAMMAL



Designs: Sammal
Design: Ritva Puotila
Material: 68 % pure new wool, 32 % linen
Production method: tufted
Pile height: 25 mm
Pile weight: 2,50 kg/m²
Suggested application: residential and light contract

Carpets are supplied to order. The maximum width is 5 m and maximum length 13 m. Round carpets are possible. For other shapes, please ask.

AAPA



Designs: Aapa
Design: Ritva Puotila
Material: 60 % wool (hard twist), 40 % linen
Production method: tufted
Pile height: 25/35 mm (stripes)
Pile weight: 2,70 kg/m²
Suggested application: residential and light contract

Carpets are supplied to order. The maximum width is 5 m and maximum length 13 m. Round carpets are possible. For other shapes, please ask.

PATH



Designs: Path
Design: Ritva Puotila
Material: 55 % pure wool, 45 % linen
Production method: tufted
Pile height: 14 mm (pile), 10 mm (loop)
Pile weight: 2,70 kg/m²
Suggested application: residential and light contract

Carpets are supplied to order. The maximum width is 5 m and maximum length 13 m. Round carpets are possible. For other shapes, please ask.

WILD



Designs: Wild
Design: Ritva Puotila
Material: 70 % linen, 30 % pure wool
Production method: tufted
Pile height: 35 mm
Pile weight: 3,50 kg/m²
Suggested application: residential and light contract

Carpets are supplied to order. The maximum width is 5 m and maximum length 13 m. Round carpets are possible. For other shapes, please ask.

TUNDRA



Designs: Tundra
Design: Ritva Puotila
Material: 70 % linen, 30 % pure wool
Production method: tufted
Loop height: 12 mm
Pile weight: 2,50 kg/m²
Suggested application: residential and light contract

Carpets are supplied to order. The maximum width is 5 m and maximum length 13 m. Round carpets are possible. For other shapes, please ask.



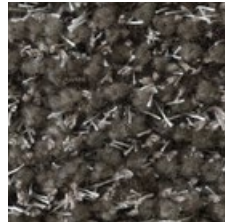
1610101 SAMMAL
WHITE



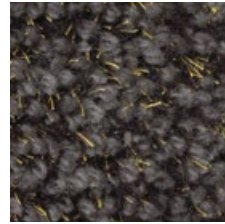
1612222 SAMMAL
ICE



1610505 SAMMAL
SAND



1613001 SAMMAL
LIGHT GREY



1611818 SAMMAL
OLIVE GREY



1610202 SAMMAL
GREY



1620101 AAPA
WHITE



1621515 AAPA
STONE



1620505 AAPA
SAND



1620202 AAPA
WARM GREY



1630101 PATH
WHITE



1631501 PATH
LIGHT GREY



1630202 PATH
GREY



1640115 WILD
LIGHT GREY



1640202 WILD
GREY



1651501 TUNDRA
STONE-WHITE



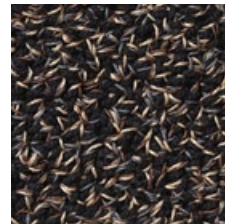
1650109 TUNDRA
WHITE-BLACK



1650901 TUNDRA
BLACK-WHITE



1650201 TUNDRA
GREY-WHITE



1650905 TUNDRA
BLACK-NATURAL

BLINDS AND PARTITIONS

ROLLER BLIND WITH CHAIN



Mechanism: D, chain operated roller blind (Silent Gliss)
Fabrics: Morning, Open Sky, Vista and Cloud (see page 60)
Suggested application: residential and contract

Silent and precise roller blind.
Metal bead chain with right or left operation. Mechanism available in white or black. Parallel blinds can be installed side by side with centre support bracket and minimal light gap. Continuous headrail helps installation. Also motorized roller blinds supplied to order.
Sizes: Blinds are produced according to customer specifications and supplied ready-made with installation kit. Max. width 200 cm.

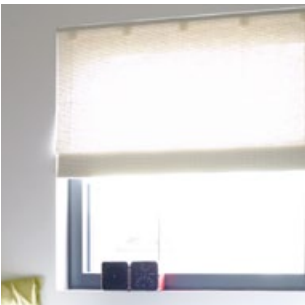
FOLDING BLIND WITH CHAIN



Mechanism: E, chain operated folding blind (Silent Gliss)
Fabrics: Morning, Open Sky, Vista and Cloud (see page 60)
Suggested application: residential and contract

Easy operating and precise folding blind.
Wind-up technique hidden in a cassette. Metal bead chain with right or left operation. Also motorized folding blinds supplied to order.
Sizes: Blinds are produced according to customer specifications and supplied ready-made with installation kit. Max. width 200 cm.

FOLDING BLIND



Mechanism: C, string operated folding blind
Fabrics: Morning, Open Sky, Vista and Cloud (see page 60)
Suggested application: residential

Smoothly translucent string operated folding blind.
Mechanism with right or left operation. Blind is supplied with a metal wall knob for fixing the strings.
Sizes: Blinds are produced according to customer specifications and supplied ready-made with installation kit. Max. width 200 cm.

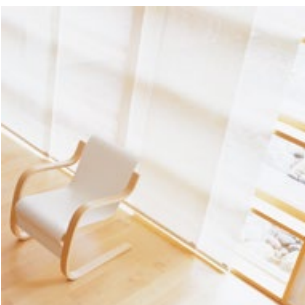
CLASSIC ROLLER BLIND



Mechanism: B, string operated roller blind
Fabrics: Morning, Open Sky, Vista and Cloud (see page 60)
Suggested application: residential

Smoothly translucent string operated roller blind.
Mechanism with right or left operation. Blind is supplied with a metal wall knob for fixing the strings.
Sizes: Blinds are produced according to customer specifications and supplied ready-made with installation kit. Max. width 200 cm.

PANEL



Mechanism: G, panel for panel glide system (Silent Gliss)
Fabrics: Morning, Open Sky, Vista, Cloud, River and Wave (see page 60)
Suggested application: residential and contract

Fabrics with varying degrees of translucency available for panels.
Panels are suited especially well for high spaces.
Velcro band at top and flat metal weight at bottom.
Mechanism supplied to order (also motorized).
Sizes: Panels are produced according to customer specifications and supplied as ready-made elements. Max. width (River and Wave) 147 cm, (Morning, Open Sky, Vista and Cloud) 150 cm.



MORNING, OPEN SKY, VISTA AND CLOUD

Design Ritva Puotila

Blind fabrics allow a delicate and soft light to pass through.

Material compositions:

Morning: 80 % paper yarn, 20 % cotton

Open Sky: 83 % paper yarn, 17 % cotton

Vista: 81 % paper yarn, 19 % cotton

Cloud: 82 % paper yarn, 18 % cotton

Weight:

Morning: 610 g/m²

Open Sky: 450 g/m²

Vista: 410 g/m²

Cloud: 485 g/m²

Fabric width: 200 cm

WAVE AND RIVER

Design Ritva Puotila

Panel fabrics are translucent.

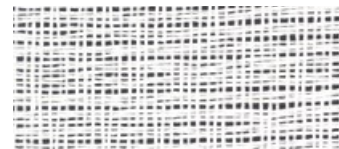
Material: 100 % paper yarn

Weight: 550 g/m²

Fabric width: 147 cm

Fabrics have been treated with soil-repellent.

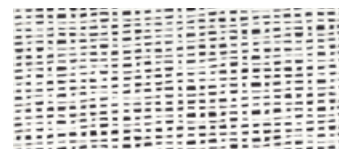
For contract use, Woodnotes fabrics and products made thereof are supplied with fire-retardant treatment upon request. Fabrics are also supplied by the meter and in rolls.



2231 I WAVE WHITE



2231 51 WAVE STONE-WHITE



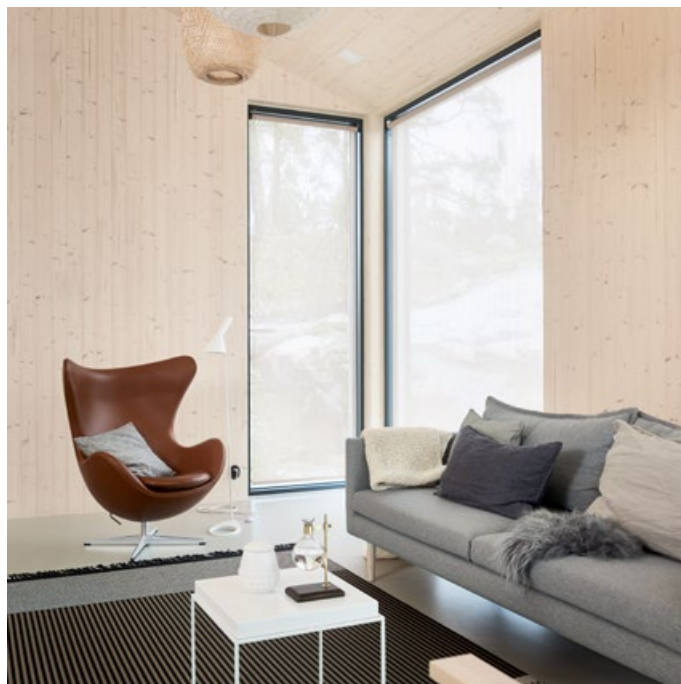
2221 I RIVER WHITE



2221 5 RIVER WHITE-NATURAL



2221 15 RIVER WHITE-STONE





21311 VISTA WHITE



21211 OPEN SKY WHITE



21111 MORNING WHITE



2140101 CLOUD WHITE



21315 VISTA WHITE-NATURAL



21215 OPEN SKY WHITE-NATURAL



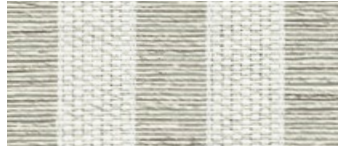
21115 MORNING WHITE-NATURAL



2140105 CLOUD WHITE-NATURAL



213115 VISTA WHITE-STONE



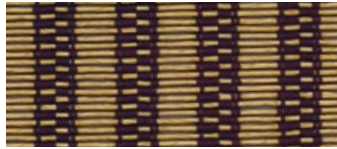
212115 OPEN SKY WHITE-STONE



211115 MORNING WHITE-STONE



2140115 CLOUD WHITE-STONE



21395 VISTA BLACK-NATURAL



21221 OPEN SKY SILVER-WHITE



21121 MORNING SILVER-WHITE



2140515 CLOUD NATURAL-STONE



21399 VISTA BLACK



21225 OPEN SKY SILVER-STONE



211215 MORNING SILVER-STONE



2140915 CLOUD BLACK-STONE



2124040 OPEN SKY GRAPHITE



21195 MORNING BLACK-NATURAL



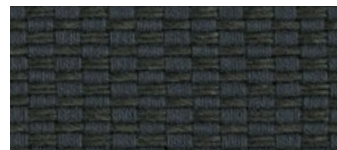
2140140 CLOUD WHITE-GRAPHITE



2124009 OPEN SKY GRAPHITE-BLACK



211915 MORNING BLACK-STONE



21199 MORNING BLACK



2114040 MORNING GRAPHITE



2114015 MORNING GRAPHITE-STONE

FURNITURE

K CHAIR



k chair has a metal matt-chromed or matt-black tubular frame and a removable upholstery. The frame consists of three removable parts, which makes it possible to ship the item in an economical package. Design Harri Koskinen.

Fabrics: Sand and Das. On request Kvadrat Steelcut Trio 3 and Hallingdal.

46001	WIDE k CHAIR	89x86x97 cm
46002	extra cover for large k chair	
46003	NARROW k CHAIR	72x86x97 cm
46004	extra cover for narrow k chair	

SWIVEL K CHAIR



The swivel k chair has a matt-chromed or matt-black base plate equipped with rotating and rocking mechanism. Tubular frame on seat. Removable upholstery in fabric or leather. The frame consists of four removable parts. Design Harri Koskinen.

Fabrics: Sand, Das and leather. On request Kvadrat Steelcut Trio 3 and Hallingdal.

46005	WIDE SWIVEL k CHAIR	89x86x97 cm
46006	extra cover for large swivel k chair	
46007	NARROW SWIVEL k CHAIR	72x86x97 cm
46008	extra cover for narrow swivel k chair	

SWIVEL K CHAIR WITH ARMRESTS



A luxurious lounge chair with armrests. Combine it with k ottoman for extra comfort. The chair has a matt-chromed or matt-black base plate equipped with rotating and rocking mechanism. Tubular frame on seat, plywood frame on armrests. Removable upholstery. Design Harri Koskinen.

Fabrics: Sand, Das and leather. On request Kvadrat Steelcut Trio 3 and Hallingdal.

46009	SWIVEL k CHAIR WITH ARMRESTS	88x86x97 cm
-------	------------------------------	-------------

K OTTOMAN



The k ottoman turns the swivel k chair into a comfortable lounge chair but it can also be used independently. The k ottoman comes with a matt-chromed or matt-black base plate or tubular feet. Plywood frame on seat. Fabric upholstery, the model with base plate is also available in leather. Design Harri Koskinen.

Fabrics: Sand, Das and leather. On request Kvadrat Steelcut Trio 3 and Hallingdal.

46011	WIDE k OTTOMAN tubular	89x53x43 cm
46013	NARROW k OTTOMAN tubular	72x53x43 cm
46015	WIDE k OTTOMAN with plate	89x53x43 cm
46017	NARROW k OTTOMAN with plate	72x53x43 cm
4605	k CUSHION	54x28x 8 cm

MY



MINI MY



Soft but sturdy, the lounge chairs are designed for casual, relaxed seating. The cover is removable and changeable. The filling of these practical chairs is a mixture of materials that is guaranteed to stay in shape. Mini My completes the lounge chair family. Design Ulla Koskinen.

Fabrics: Sand, Saimaa and Das. On request Kvadrat Steelcut Trio 3.

4611	MY	95x140x85 cm
4610	MINI MY	75x110x70 cm

ROO



Roo is long and divan-like, inviting you for a moment of rest. Design Ulla Koskinen.

Fabrics: Sand, Saimaa and Das. On request Kvadrat Steelcut Trio 3.

4612	ROO	95x180x85 cm
------	-----	--------------

REST MY



My lounge chair upholstered with Rest fabric. Rest allows the use of leftover materials from the Sand upholstery fabric. Stripe pattern design Paspas Finland/Mari Isopahkala and Tanja Sipilä.

461179151	REST MY	95x140x85 cm
-----------	---------	--------------

CUSHIONS



Cool cushion has an inner pillow filled with a high density plastic foam and is well suited to use as seat, ottoman or side table. All cushion cases are closed with a velcro band. Design Ritva Puotila and Minna Ahokas.

Fabrics: Sand and Das.

434	COOL CUSHION	50x50x32 cm
435	COOL CUSHION	60x60x32 cm
436	ROUND COOL CUSHION	Ø 60x32 cm

BENCH



Woodnotes benches are upholstered and they have a wooden frame with 5 cm high wooden (birch or stained black) or metal feet. Benches in sizes 40x40, 50x50 and 60x60 cm are supplied with button feet (height 1,5 cm). Design Ulla Koskinen.

Fabrics: Sand and Das. On request Kvadrat Steelcut Trio 3.

45601	BENCH	40/50/60x40-160x43 cm
45601	SQUARE BENCH	□ 80x43 □ 100x43 □ 120x43 cm
45605	ROUND BENCH	Ø 60x43 Ø 90x43 Ø 120x43 cm

Other sizes and heights are supplied to order.

FURNITURE

SIRO+



A multipurpose chair that can be used as a dining chair, but it can be also used as a night table, bench or side chair. It is made out of oak, lacquered or stained black. There is a choice of wooden seat or Sand paper yarn cotton fabric or leather upholstered seat. Design Ilkka Suppanen and Raffaella Mangiarotti.

Hard	Upholstered		
4400	4400	SIRO+	44,5x52,5x78,5 cm
4409	4419	SIRO+ black	44,5x52,5x78,5 cm

SIRO+ WITH ARMRESTS



The Siro+ chair with armrests is a dining chair made of oak and lacquered or stained black. The armrest is a bent metal covered with leather curved around the chair creating a beautiful and slender look. There is a choice of wooden, leather or Sand paper yarn cotton fabric or leather upholstered seat. Design Ilkka Suppanen and Raffaella Mangiarotti.

Hard	Upholstered		
4450	4460	SIRO+ with armrests	59x52,5x78,5 cm
4459	4469	SIRO+ with armrests, black	59x52,5x78,5 cm

SIRO+ BAR STOOL



The Siro+ bar stool is beautifully proportioned high stool with a backrest lowered as if it was a handle. It's made of oak and lacquered or stained black. The footrest is brass or black painted metal. There are two seating heights available: 65 cm and 75 cm and a choice of wooden, leather or Sand paper yarn cotton fabric or leather upholstered seat. Design Ilkka Suppanen and Raffaella Mangiarotti.

Hard	Upholstered		
4470	4470U	SIRO+ BAR STOOL 65	38,5x43x82,5 cm
4479	4479U	SIRO+ BAR STOOL 65 black	38,5x43x82,5 cm
4480	4480U	SIRO+ BAR STOOL 75	38,5x43x92 cm
4489	4489U	SIRO+ BAR STOOL 75 black	38,5x43x92 cm

TWIGGY



Twiggy is a small visually and physically light side table. The structure is a beautiful play of sticks which can be seen under the glass top. This table is multifunctional and easy to move around. Oak frame is polished with wax or stained black. Design Ilkka Suppanen and Raffaella Mangiarotti.

Oak	Black		
46700W	46700WB	TWIGGY	44x44x45,5 cm
46702W	46700WB	TWIGGY	66,5x66,5x38,5 cm
46703W	46700WB	TWIGGY	44x88x45,5 cm

Sand fabric specifications and colour chart: see page 67.



FURNITURE

BED



Woodnotes bed includes wooden frame and base, also available without the base. Bed sides are upholstered. Also available with four sides (can be used without the headboard).

Fabrics: Sand. On request Kvadrat Steelcut Trio 3.

47010	BED with base	80x200 90x200	160x200 cm 180x200
47011	BED with base	90x210	180x210 cm
47005	BED frame only	160x200	180x200 cm 180x210

Other sizes are supplied to order. Headboard to be ordered separately.

BED HEADBOARD



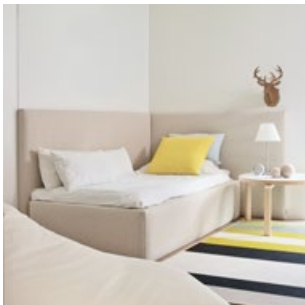
Woodnotes bed headboard is upholstered with Sand paper yarn cotton fabric. The dustless and anti-static upholstery is ideal for use in bedroom. It can also be used together with benches. The headboard has a wooden frame. It is also available in two elements.

Fabrics: Sand. On request Kvadrat Steelcut Trio 3.

47001C	BED HEADBOARD	height	95/110/125 cm
		width	105–360 cm

Other sizes are supplied to order.

CORNER BED



Woodnotes corner bed version is created with two headboards, one at the end and the other at the side of the bed, creating a cozy nest for example for children's rooms. Daytime the bed can be used as a sofa. Corner bed is upholstered with Sand paper yarn cotton fabric. The dustless and anti-static upholstery is ideal for use in bedroom.

Fabrics: Sand. On request Kvadrat Steelcut Trio 3.

47004	CORNER BED	80x200 cm 90x200 90x210
-------	------------	-------------------------------

Other sizes are supplied to order.

WHISPER



Whisper is an environmentally friendly acoustic panel made from pure and safe raw materials. Wooden frame, inside material fire resistant recycled polyester insulation. Cover is upholstered with Sand paper yarn cotton fabric. Excellent audio-technological features. Suspension with wall rails. Suggested applications: residential and contract. Design Tapio Anttila.

4801	A0402	40x 20x 4	A0606	60x 60x 4	A0802	80x20x 4 cm
	B0402	40x 20x10	B0606	60x 60x10	B0802	80x20x10
	A0410	40x100x 4	A0612	60x120x 4	A0808	80x80x 4
	B0410	40x100x10	B0612	60x120x10	B0808	80x80x10

Available also in reversed measures. Other sizes are supplied to order.

LOUDWHISPER



The Loudwhisper speaker concept is mainly designed to be used together with Whisper acoustic panels. The high-end speakers have wooden frame upholstered with Sand paper yarn cotton fabric, slender design (depth 10 cm) and on-wall installation with rails. Design Woodnotes design team, loudspeaker audio technology by Sonolux.

4850	60x60x10 cm 80x60x10 60x80x10
------	-------------------------------------

UPHOLSTERY FABRICS

SAND

Design Ritva Puotila

Material: 70 % paper yarn, 30 % cotton
 Weight: 660 g/m²
 Fabric width: 160 cm
 Martindale: 50.000

Sand paper yarn cotton upholstery fabric is designed for furniture in the home and in public spaces. It is supplied with soil-repellent treatment.

According to the smouldering cigarette and match flame tests, Sand upholstery fabric can be used in upholstered furniture of public premises such as hotels, restaurants, theatres and in board ship industry.

SAIMAA OUTDOOR/INDOOR

Design Ritva Puotila

Material: 100 % polypropene
 Weight: 550 g/m²
 Fabric width: 160 cm
 Martindale: 30.000

Resistant to chlorine, salt, mildew and bacteria. Warm like wool and is thermoregulating and transpiring.

DAS

Material: 50 % PP, 31 % PES, 19 % CO
 Weight: 658 g/m²
 Fabric width: 140 cm
 Martindale: 36.000

Natural look and resistant to wear. The fabric's high light-fastness prevents the colours from fading. Easy to clean.



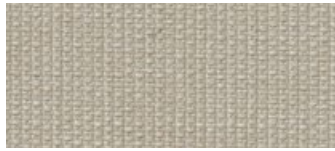
01 DAS WHITE



2580101 SAIMAA NATURAL WHITE



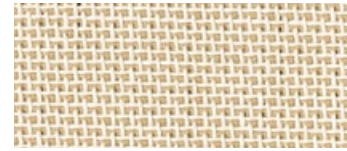
25611 SAND WHITE



02 DAS LIGHT BEIGE



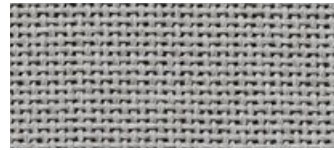
2580501 SAIMAA LIGHT SAND



25615 SAND WHITE-NATURAL



50 DAS STONE



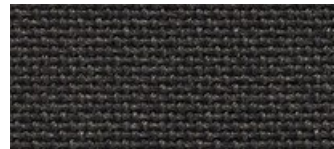
2583040 SAIMAA PEARL GREY



256151 SAND STONE-WHITE



07 DAS LIGHT GREY



2584040 SAIMAA GRAPHITE



25659 SAND NATURAL-BLACK



51 DAS GREY



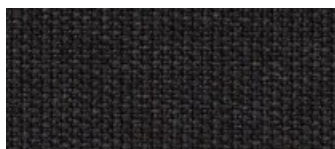
256159 SAND STONE-BLACK



52 DAS DARK GREY



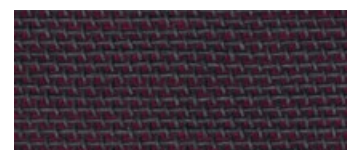
2563434 SAND BRASS



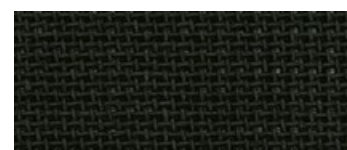
55 DAS BLACK



2564040 SAND GRAPHITE



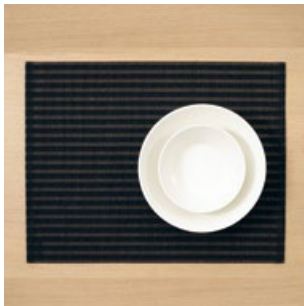
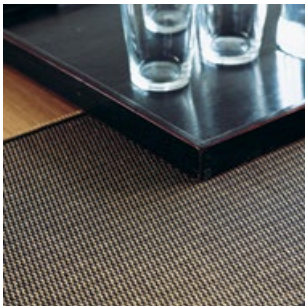
256928 SAND BLACK-BLACK ROSE



25699 SAND BLACK

ACCESSORIES

PLACE MATS



The collection features place mats made of paper yarn, woven onto a cotton warp. The material has been soil-repellent treated. There are three designs available: Morning, Open Sky, Vista and Cloud. Design Ritva Puotila.

Size: 35x45 cm (4 pcs/package)

TABLE RUNNERS



The collection features table runners made of paper yarn, woven onto a cotton warp. The material has been soil-repellent treated. There are three designs available: Morning, Open Sky, Vista and Cloud. Design Ritva Puotila.

Sizes: 35x120, 35x180 cm

Other lengths are supplied to order. 45 cm wide table runners are available on request (only in blind fabric colours).

FLAKE



FLOWER



Flake and Flower interior elements can be applied to curtain like uses. They work well as partitions or can even be used for table decoration. Pieces are joined together and the element can easily be undone. You can create a compact or a net like, loose surface. Three-dimensional forms are also possible. Design Mia Cullin.

Material: Tyvek®
Package size: 160 pcs (approx. 2,5-4 m²)

REST CUSHION



The design of the Rest fabric began from the use of leftover materials from the Sand upholstery fabric. The pattern of the Rest cushions is slightly different on each side. Beautiful and earthy tones match with various decorations. Rest cushions have a lining and due to the sturdiness of the fabric they can be used as floor cushions. Design Paspas Finland / Mari Isopahkala and Tanja Sipilä.

4331711	WHITE	50x50 cm
43317151	STONE-WHITE	50x50 cm
433173434	BRASS	50x50 cm
433174040	GRAPHITE	50x50 cm

Sand fabric specifications and colour chart: see page 67.



31311 VISTA WHITE



31211 OPEN SKY WHITE



31111 MORNING WHITE



3140101 CLOUD WHITE



31315 VISTA WHITE-NATURAL



31215 OPEN SKY WHITE-NATURAL



31115 MORNING WHITE-NATURAL



3140105 CLOUD WHITE-NATURAL



31315 VISTA WHITE-STONE



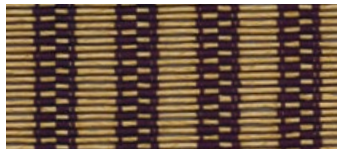
31215 OPEN SKY WHITE-STONE



31115 MORNING WHITE-STONE



3140115 CLOUD WHITE-STONE



31395 VISTA BLACK-NATURAL



3124040 OPEN SKY GRAPHITE



311915 MORNING BLACK-STONE



3140515 CLOUD NATURAL-STONE



31399 VISTA BLACK



3124009 OPEN SKY GRAPHITE-BLACK



31195 MORNING BLACK-NATURAL



3140915 CLOUD BLACK-STONE



31191 MORNING BLACK-WHITE



3140140 CLOUD WHITE-GRAPHITE



31199 MORNING BLACK



3114040 MORNING GRAPHITE



3114015 MORNING GRAPHITE-STONE

MORNING, OPEN SKY, VISTA AND CLOUD

Design Ritva Puotila

Material compositions:

Morning: 80 % paper yarn, 20 % cotton

Open Sky: 83 % paper yarn, 17 % cotton

Vista: 81 % paper yarn, 19 % cotton

Cloud: 82 % paper yarn, 18 % cotton

Fabrics have been treated with soil-repellent.

ACCESSORIES

BOX ZONE AND ROUND ZONE CONTAINERS



Box Zone and Round Zone containers offer many ways to store goods both in the home and at office. Box Zone is available in six sizes, Round Zone in three sizes. Design Minna Ahokas.

BOX ZONE

360	15x15x15	361	20x20x20	362	30x30x30 cm
363	40x40x40	361A	20x20x15	362B	30x30x20

ROUND ZONE

371	Ø 20x20	372	Ø 30x30	373	Ø 40x40 cm
-----	---------	-----	---------	-----	------------

BASIC TOTE BAG



Basic tote bag is a casual bag for everyday use. The cotton trimmings make the tote bag strong and durable. Basic tote bag is available in two sizes. Design Ritva Puotila.

413	TOTE BAG M	45x32 cm
412	TOTE BAG L	58x34 cm

BEACH BAG



Spacious Beach bag is an easy bag for the holiday season. Design Minna Ahokas.

4174	BEACH BAG M	52x37x20 cm
4173	BEACH BAG L	65x48x20 cm

BRIEFCASE



Briefcase is an ideal light case for papers, catalogues etc. Design Minna Ahokas.

4181	BRIEFCASE	37x26x 2 cm
------	-----------	-------------

PLAIN

Design Ritva Puotila

Material: 100 % paper yarn



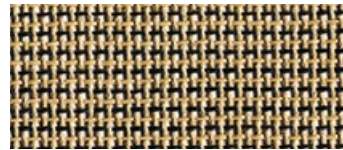
11 PLAIN WHITE



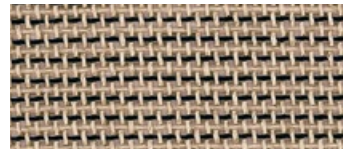
55 PLAIN NATURAL



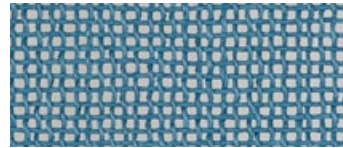
1515 PLAIN STONE



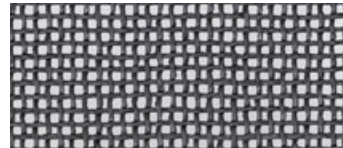
59 PLAIN NATURAL-BLACK



159 PLAIN STONE-BLACK



4141 PLAIN TURQUOISE



4040 PLAIN GRAPHITE



91 PLAIN BLACK-WHITE



99 PLAIN BLACK

STUDIO COLLECTION

SEABORN



Seaborn throw suits well to be used for example on the bed.
Design Ritva Puotila.

Quality: hand-knitted 100 % paper yarn
Sizes: 110x200, 140x200 cm
Other sizes available on request.

VEIL



Veil curtain can be used as a cloud-like curtain or a room divider.
Design Ritva Puotila.

Quality: hand-knitted 100 % paper yarn
Sizes: 130x240, 130x290 cm
Other sizes available on request.

MESH



Mesh partition gets an interesting glow effect from metal wires.
It also works as a throw.
Design Ritva Puotila.

Quality: hand-knitted paper yarn and copper or steel
Sizes: 130x240, 130x290 cm
Other sizes available on request.

WOODWOOL



The contrasting feel of materials, softness of wool and stiffness of paper, literally intertwine as an interesting weave in the hand knitted Woodwool carpets. The colour chart varies from light tones to intensive dark tones. Can be used also as a throw on the bed. Design Ritva Puotila.

Quality: hand-knitted 62 % wool, 38 % paper yarn
Sizes: 80x160, 110x200, 140x200 cm
Other sizes available on request.



47201 SEABORN CLOUD



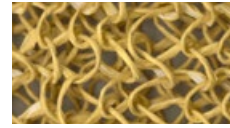
47215 SEABORN STONE



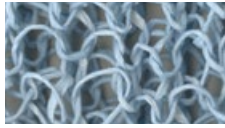
47205 SEABORN NATURE



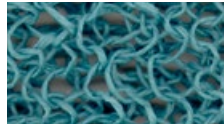
47206 SEABORN ABSINTHE



47203 SEABORN DRY STRAW



47204 SEABORN SKY



47241 SEABORN TURQUOISE



47210 SEABORN DARK BLUE



47240 SEABORN GRAPHITE



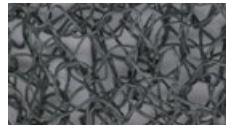
47209 SEABORN BLACK



7210101 VEIL WHITE



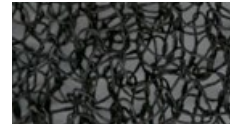
7211515 VEIL STONE



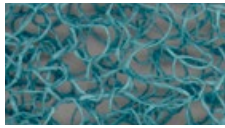
7214040 VEIL GRAPHITE



7210404 VEIL DARK BLUE



7210909 VEIL BLACK



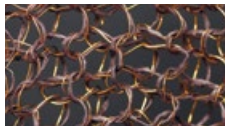
7214141 VEIL TURQUOISE



7210606 VEIL ABSINTHE



7210505 VEIL NATURAL



7111605 MESH
WENGE-COPPER



7110905 MESH BLACK-COPPER



7110902 MESH BLACK-STEEL



7300101 WOODWOOL WHITE



7300606 WOODWOOL
ABSINTHE

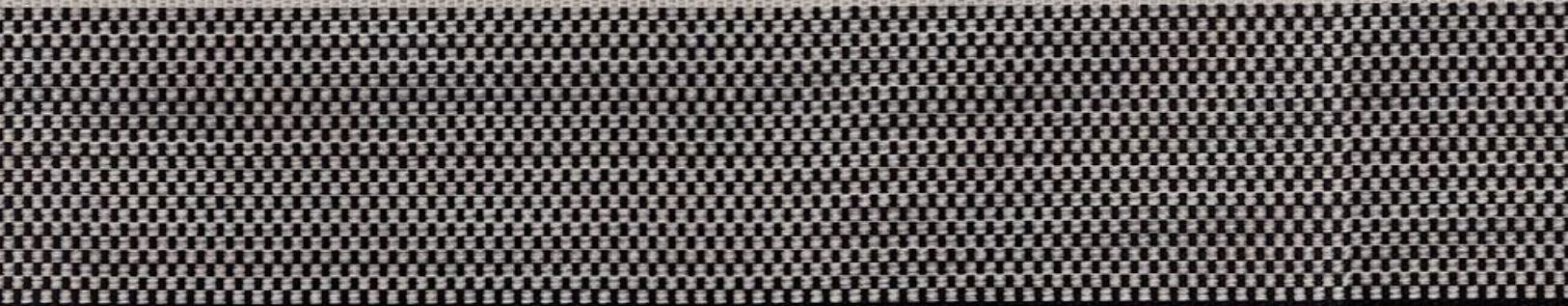
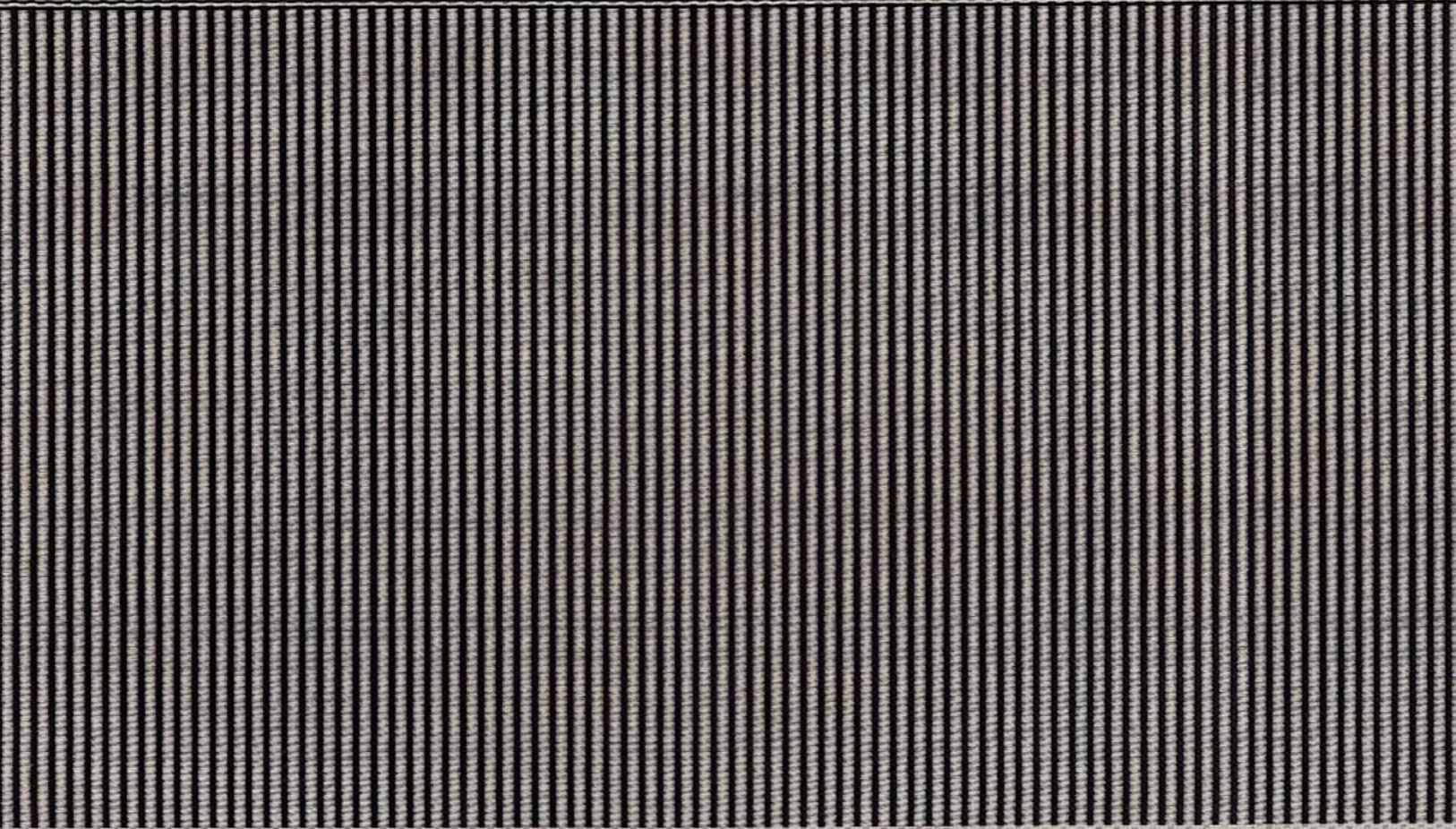


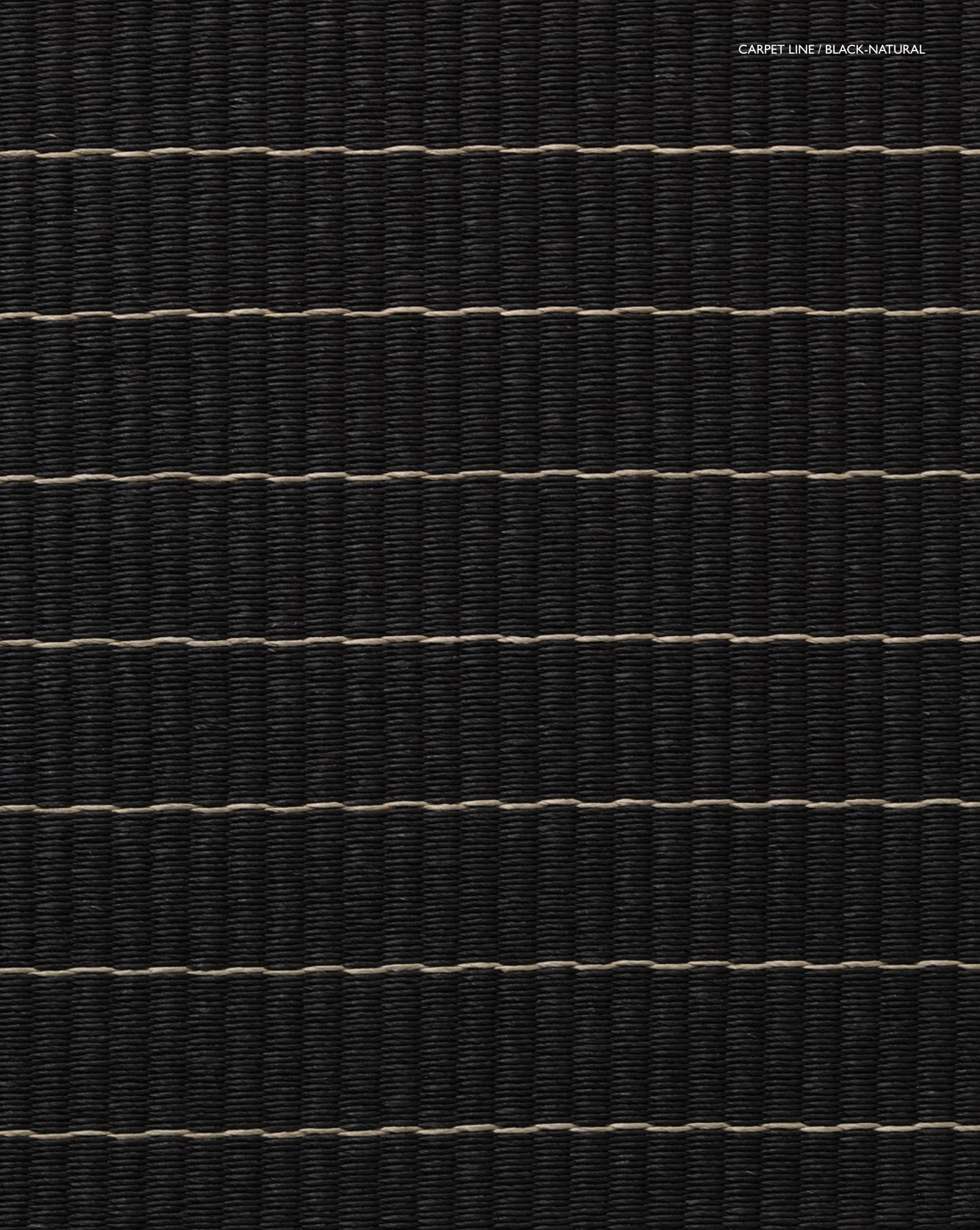
7304040 WOODWOOL
GRAPHITE



7300904 WOODWOOL
BLACK-BLUE

Due to printing technical reasons the colours in the brochure may not fully correspond to the actual colours. There may be slight differences in the shades of colours when comparing samples and products.





WOODNOTES OY

TALLBERGINKATU 1B,
00180 HELSINKI, FINLAND
TEL +358 9 694 2200, FAX +358 9 694 2221
woodnotes@woodnotes.fi
www.woodnotes.fi
@woodnotesdesign