

## FURNITURE

### K CHAIR



k chair has a metal matt-chromed or matt-black tubular frame and a removable upholstery. The frame consists of three removable parts, which makes it possible to ship the item in an economical package. Design Harri Koskinen.

Fabrics: Sand and Das. On request Kvadrat Steelcut Trio 3 and Hallingdal.

46001	WIDE k CHAIR	89x86x97 cm
46002	extra cover for large k chair	
46003	NARROW k CHAIR	72x86x97 cm
46004	extra cover for narrow k chair	

### SWIVEL K CHAIR



The swivel k chair has a matt-chromed or matt-black base plate equipped with rotating and rocking mechanism. Tubular frame on seat. Removable upholstery in fabric or leather. The frame consists of four removable parts. Design Harri Koskinen.

Fabrics: Sand, Das and leather. On request Kvadrat Steelcut Trio 3 and Hallingdal.

46005	WIDE SWIVEL k CHAIR	89x86x97 cm
46006	extra cover for large swivel k chair	
46007	NARROW SWIVEL k CHAIR	72x86x97 cm
46008	extra cover for narrow swivel k chair	

### SWIVEL K CHAIR WITH ARMRESTS



A luxurious lounge chair with armrests. Combine it with k ottoman for extra comfort. The chair has a matt-chromed or matt-black base plate equipped with rotating and rocking mechanism. Tubular frame on seat, plywood frame on armrests. Removable upholstery. Design Harri Koskinen.

Fabrics: Sand, Das and leather. On request Kvadrat Steelcut Trio 3 and Hallingdal.

46009	SWIVEL k CHAIR WITH ARMRESTS	88x86x97 cm
-------	------------------------------	-------------

### K OTTOMAN



The k ottoman turns the swivel k chair into a comfortable lounge chair but it can also be used independently. The k ottoman comes with a matt-chromed or matt-black base plate or tubular feet. Plywood frame on seat. Fabric upholstery, the model with base plate is also available in leather. Design Harri Koskinen.

Fabrics: Sand, Das and leather. On request Kvadrat Steelcut Trio 3 and Hallingdal.

46011	WIDE k OTTOMAN tubular	89x53x43 cm
46013	NARROW k OTTOMAN tubular	72x53x43 cm
46015	WIDE k OTTOMAN with plate	89x53x43 cm
46017	NARROW k OTTOMAN with plate	72x53x43 cm
4605	k CUSHION	54x28x 8 cm

# UPHOLSTERY FABRICS

## SAND

Design Ritva Puotila

Material: 70 % paper yarn, 30 % cotton  
Weight: 660 g/m<sup>2</sup>  
Fabric width: 160 cm  
Martindale: 50.000

Sand paper yarn cotton upholstery fabric is designed for furniture in the home and in public spaces. It is supplied with soil-repellent treatment.

According to the smouldering cigarette and match flame tests, Sand upholstery fabric can be used in upholstered furniture of public premises such as hotels, restaurants, theatres and in board ship industry.

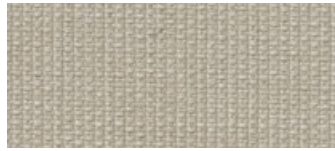
## DAS

Material: 50 % PP, 31 % PES, 19 % CO  
Weight: 658 g/m<sup>2</sup>  
Fabric width: 140 cm  
Martindale: 36.000

Natural look and resistant to wear: The fabric's high light-fastness prevents the colours from fading. Easy to clean.



01 DAS WHITE



02 DAS LIGHT BEIGE



50 DAS STONE



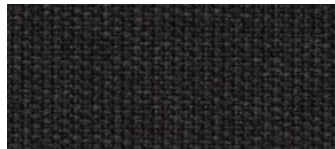
07 DAS LIGHT GREY



51 DAS GREY



52 DAS DARK GREY



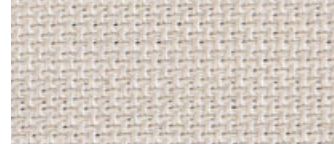
55 DAS BLACK



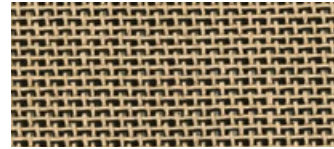
25611 SAND WHITE



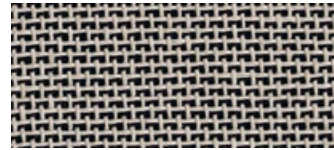
25615 SAND WHITE-NATURAL



25615I SAND STONE-WHITE



25659 SAND NATURAL-BLACK



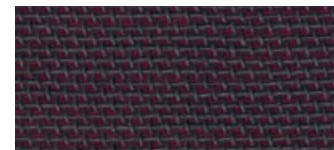
256159 SAND STONE-BLACK



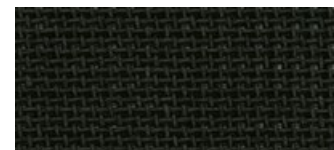
2563434 SAND BRASS



2564040 SAND GRAPHITE



256928 SAND BLACK-BLACK ROSE



25699 SAND BLACK